



Hydropan Control Panel

1. Product Information

ETNA Control Panel is used to control and display modes, faults of two pump booster systems, has 2*16 character LCD display and uniquely designed electronic main board and display module. The panel has General Fault / No Water / Phase Fault warning leds, Up / Down buttons enabling surfing into the menus, Automatic / Test buttons used to control each pump, Pressure Switch, Pump Operation and Automatic Run Mode warning leds, as well as Reset, Cancel and Approval buttons. System parameters can be set easily using Approval/Cancel/Up/Down buttons on related Settings menus.

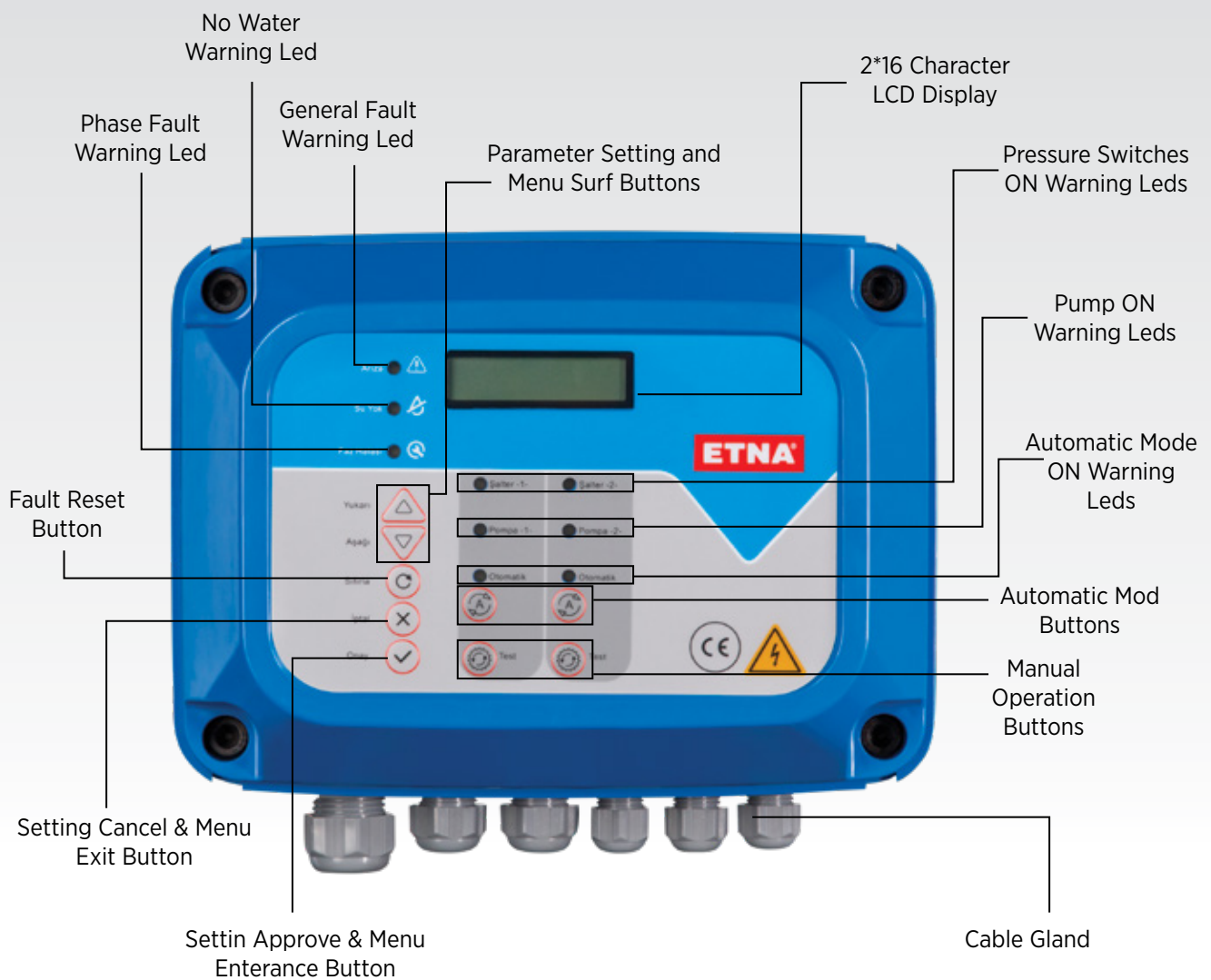


Figure 1. Control Panel-External View

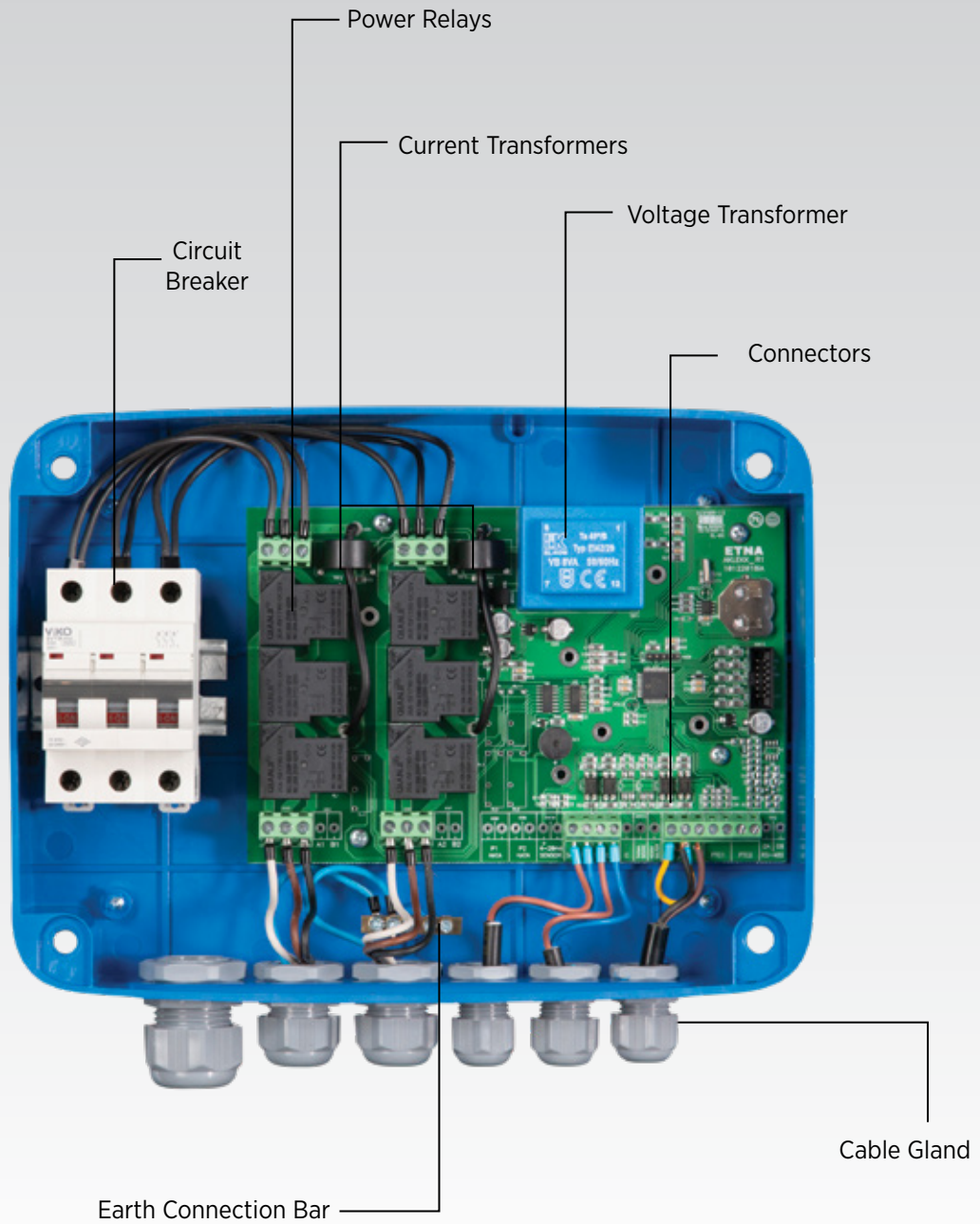


Figure 2. Control Panel-Internal View

2. Technical Specifications

- 8 bit microcontroller based design
- 16 Mhz clock frequency
- 2x16 character white LCD display
- Date & Time display on screen
- 3 phase voltage measurement and display on screen
- High Voltage Protection Setting
- Pump running and fault modes display
- Pump running currents display on screen during operation
- Adjustable High & Low Current Protection parameter
- Adjustable High & Low Current Protection duration
- Reset on current faults
- Automatic and Manual Operation modes
- Manual operation using Test buttons
- Dry running protection with floater
- Additional dry running protection using minimum current protection algorithm
- Display all faults on screen
- Audible fault warning with buzzer
- Display pump running time on screen
- Cyclic change-over with real time
- Password protection against unauthorized intervention
- Fault history logs up to 24 faults including occurrence date and time
- Ability to transfer operating and error information to automation system with dry contacts in full version

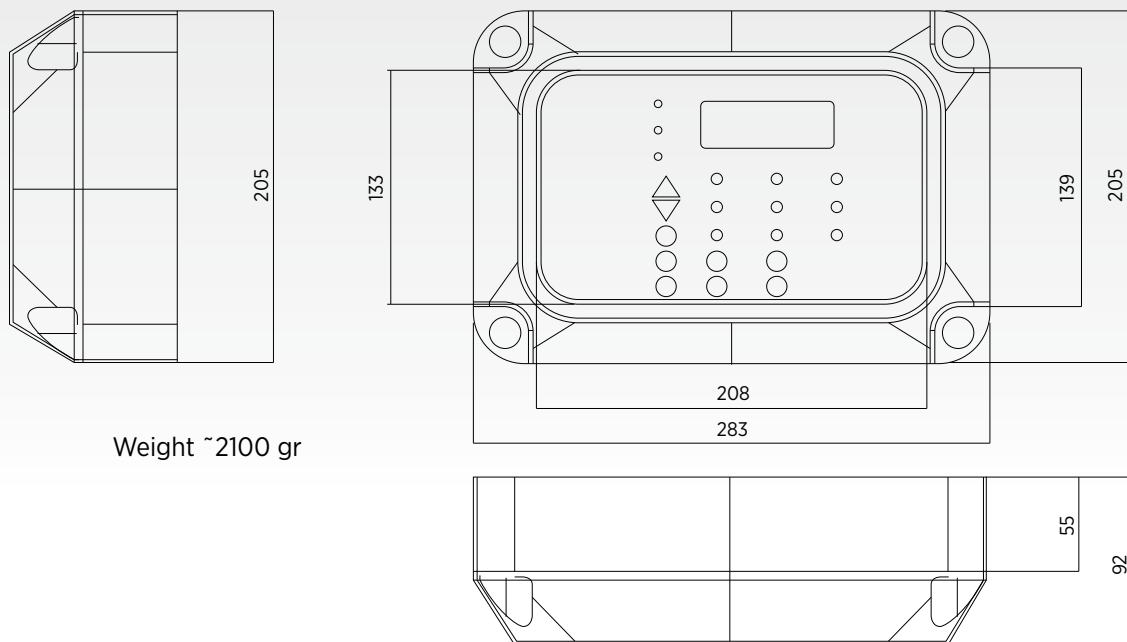


Figure 3. Control Panel Dimensions

3. Leds and Buttons on Front Panel

- **General Fault Led:** This led is ON when low current , high current, low voltage and high voltage protections are active
- **Phase Fault Led:** This led is used for warning purpose and it is ON when phase absence or phase sequence fault is detected.
- **Up / Down Buttons:** These buttons enable to surf within menus on LCD screen and they are used to set values of numerical parameters.
- **Reset Button:** This button is used to reset a fault occurred during operation. Reset will be active after pressing this button for 5 seconds and the display shows opening screen
- **Cancel Button:** This button enables to go back to upper menu during surfing the menus, cancel changes performed during parameter setting, and silence buzzer in case an alarm is active.
- **Approval Button:** This button enables to enter submenus and save the parameter already set values.
- **Pressure Switch 1/2 Leds:** This leds are ON when the pressure switches on the system are active.
- **Pump - 1/2 Leds :** The related led(s) are ON when one or both pumps on the system starts operating.
- **Automatic Buttons:** These buttons enable to select automatic or manual operation control for corresponding pump.
- **Test Buttons:** Pumps can be operated by these buttons when the system is on manual mode. Pumps will run during these buttons are pushed.
- **Automatic Leds:** These leds indicate the pumps which are operating on automatic mode.

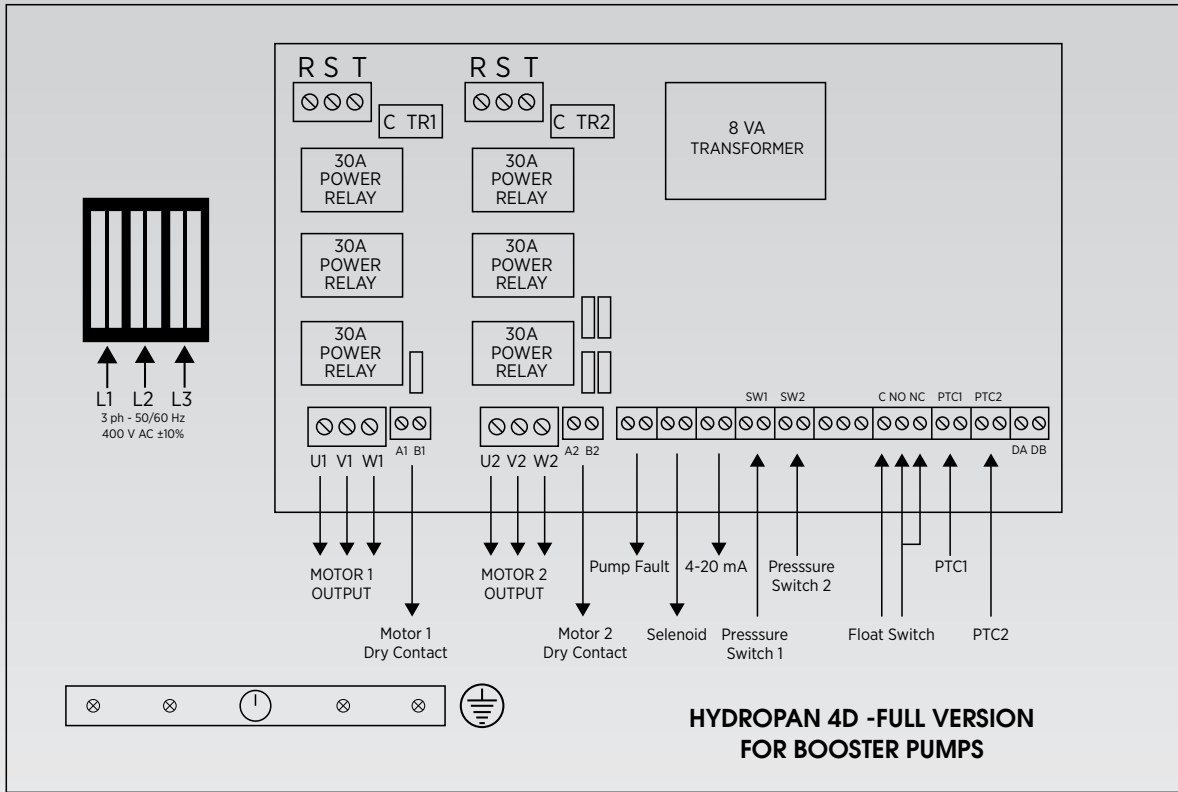


Figure 4. Hydroman Three-Phase Wiring Diagrams - Booster

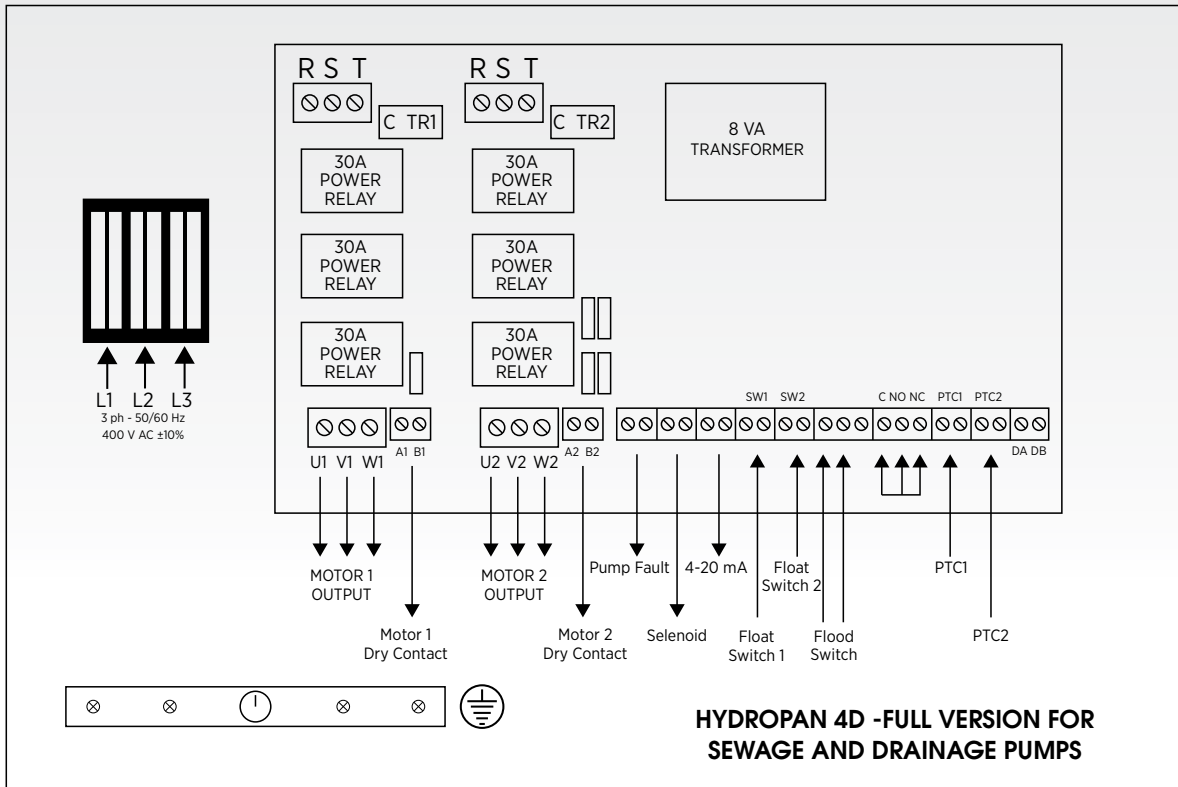


Figure 5. Hydroman Three-Phase Wiring Diagrams - Sewage and Drainage

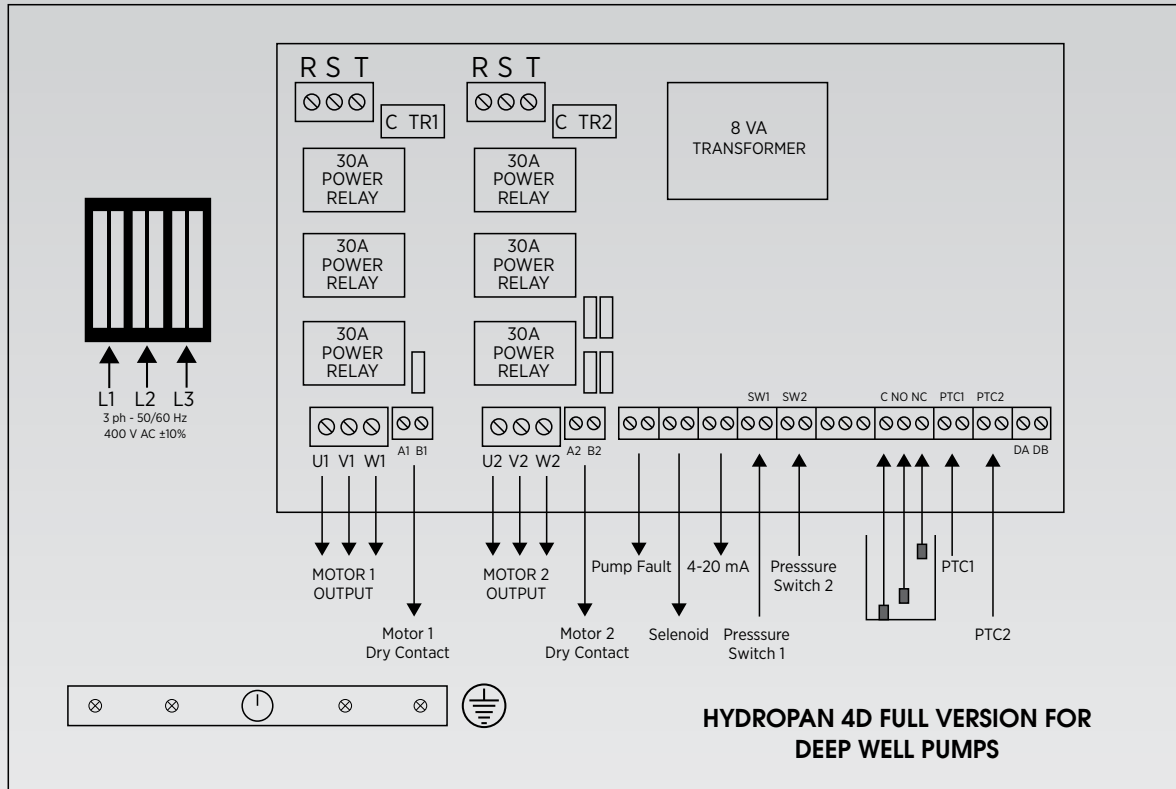


Figure 6. Hydroman Three-Phase Wiring Diagrams – Deep Well

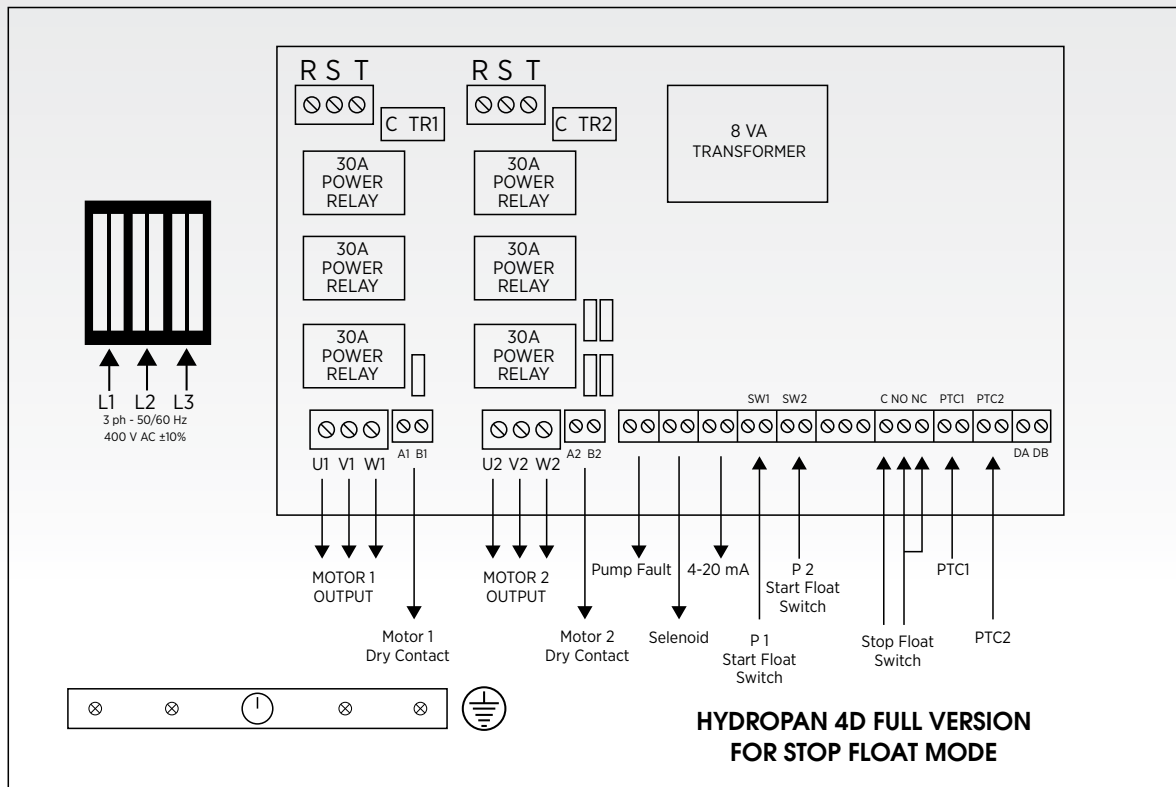


Figure 7. Hydroman Three-Phase Wiring Diagrams – Stop Float

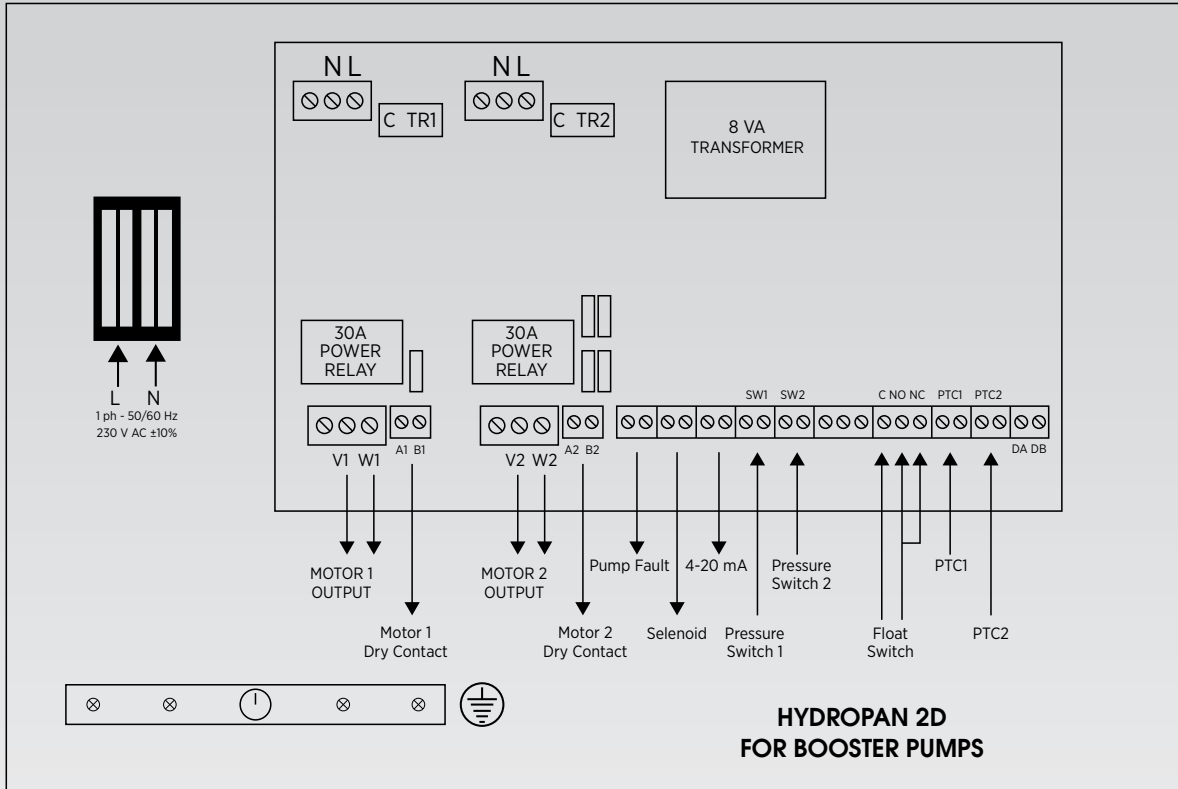


Figure 8. Hydroman Single-Phase Wiring Diagrams – Booster

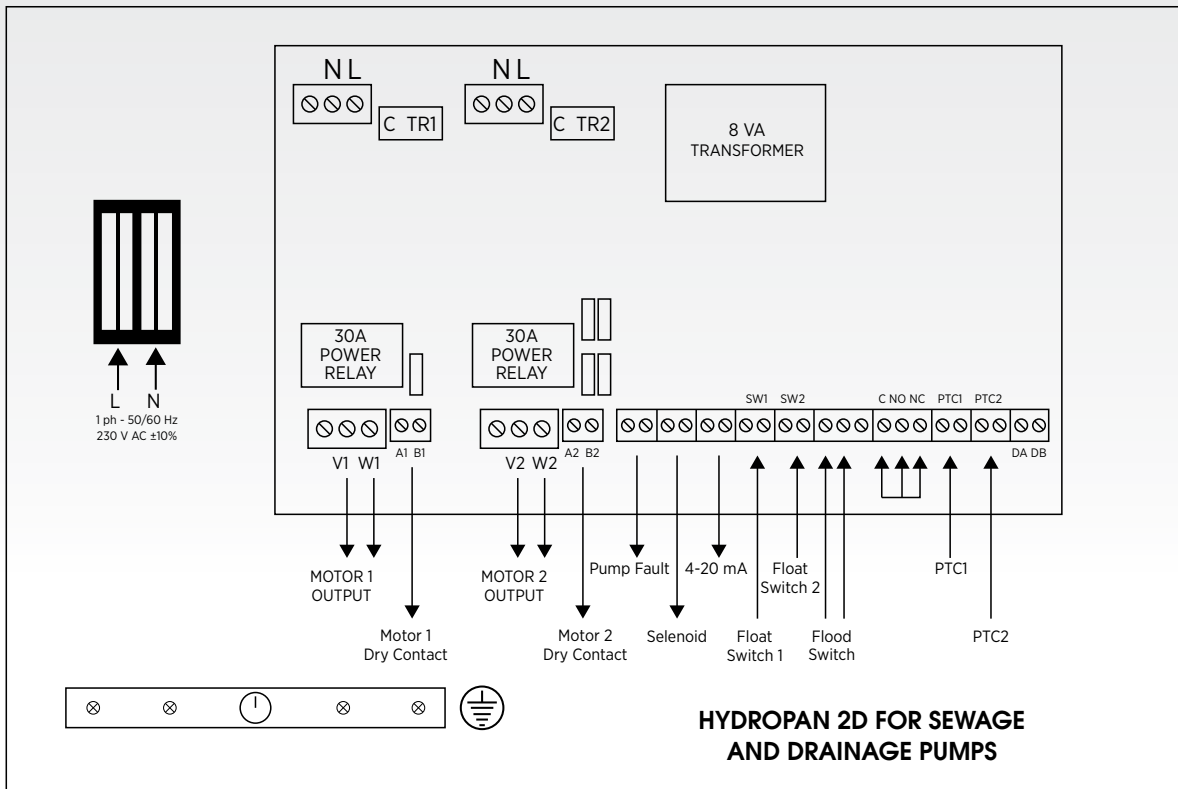


Figure 9. Hydroman Single-Phase Wiring Diagrams – Sewage and Drainage

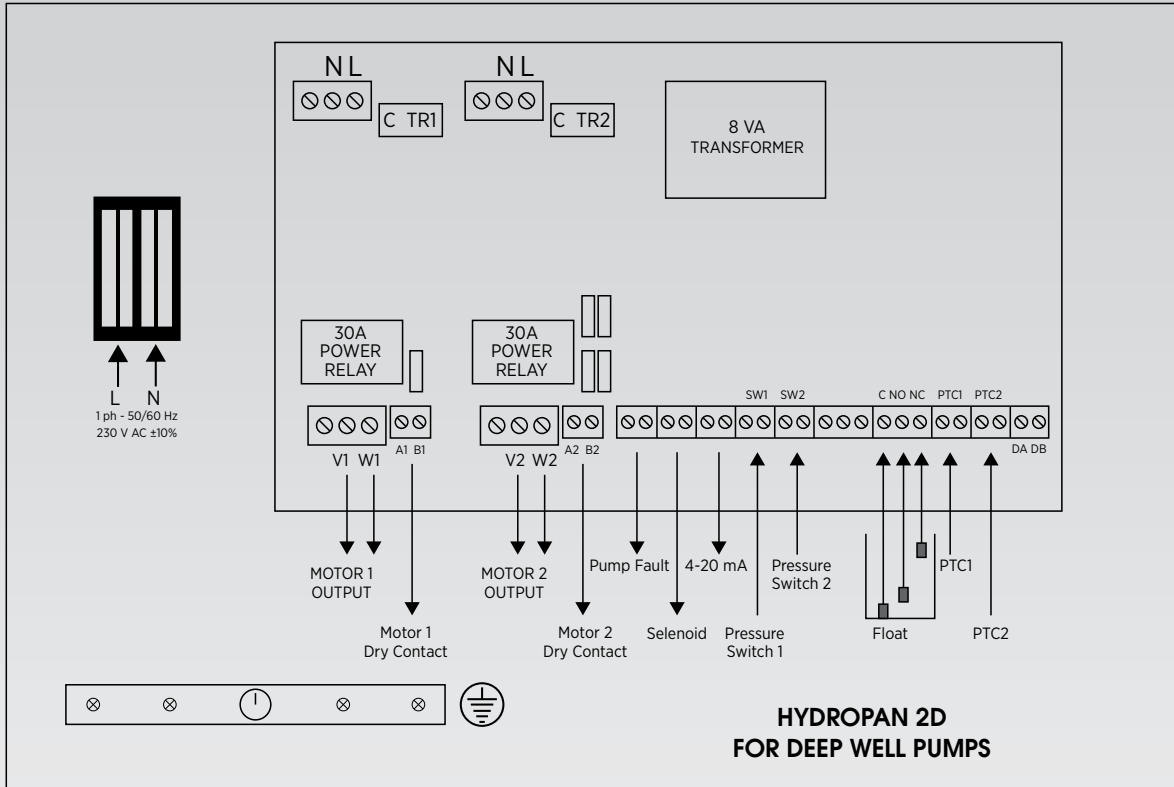


Figure 10. Hydroman Single-Phase Wiring Diagrams – Deep Well

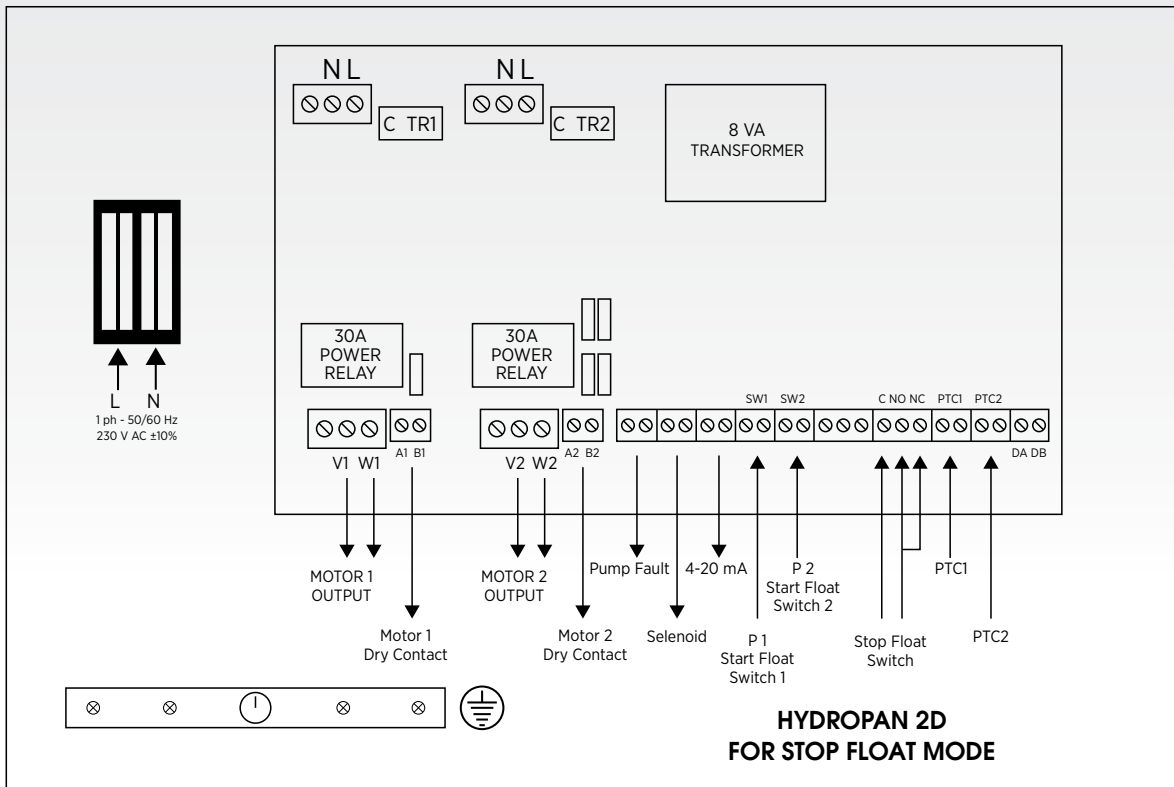


Figure 11. Hydroman Single-Phase Wiring Diagrams – Stop Float



Dudullu Organize Sanayi Bölgesi 2. Cadde No: 14
34775 Ümraniye İstanbul / Turkey
Tel : +90 216 561 47 74 (Pbx) • Fax : +90 216 561 47 50
www.etna.com.tr/en • info@etna.com.tr



ETNA®

0850 455 38 62
customer service